



.style//GUIDE

ep.94: Aaahh! Real Monsters

REPOSTME 



**All images were made with prompts
in Midjourney 5.2 starting with:
"Style of Aaahh! Real Monsters,"**

Hi! I'm Leo!

These guides are centered around styles.

In order to keep the style dominant, I use short, simple prompts, with my standard set being:

"a man"

"a woman"

"a dog"

"a cat"

"a cyborg"

"an alien"

"a monster"

"a car"

"a motorcycle"

"a house"

"a landscape"

"an arcology"



Make sure to “dress” your styles.

What? Add descriptors. Examples include:

Mood: happy, joyous, sad, frightened, terrified

Lighting: dark, intense, varied, chiaroscuro, diffuse

Medium: photograph, illustration, anime, painting

Camera: Canon EOS Mark5D, iPhone, GoPro, Polaroid

Composition: Skewed, centered, off-center

Parameters (must go at end)

--ar 3:4 Aspect ratio 3 wide 4 tall

--niji Use the Niji anime style

--style raw Use an intense, raw style

--weird 3000 0 to 3000 weird factor



REPOSTME 

**Post your own image generations or tips
below in comments, for fun and
exposure!**

I also take style requests!























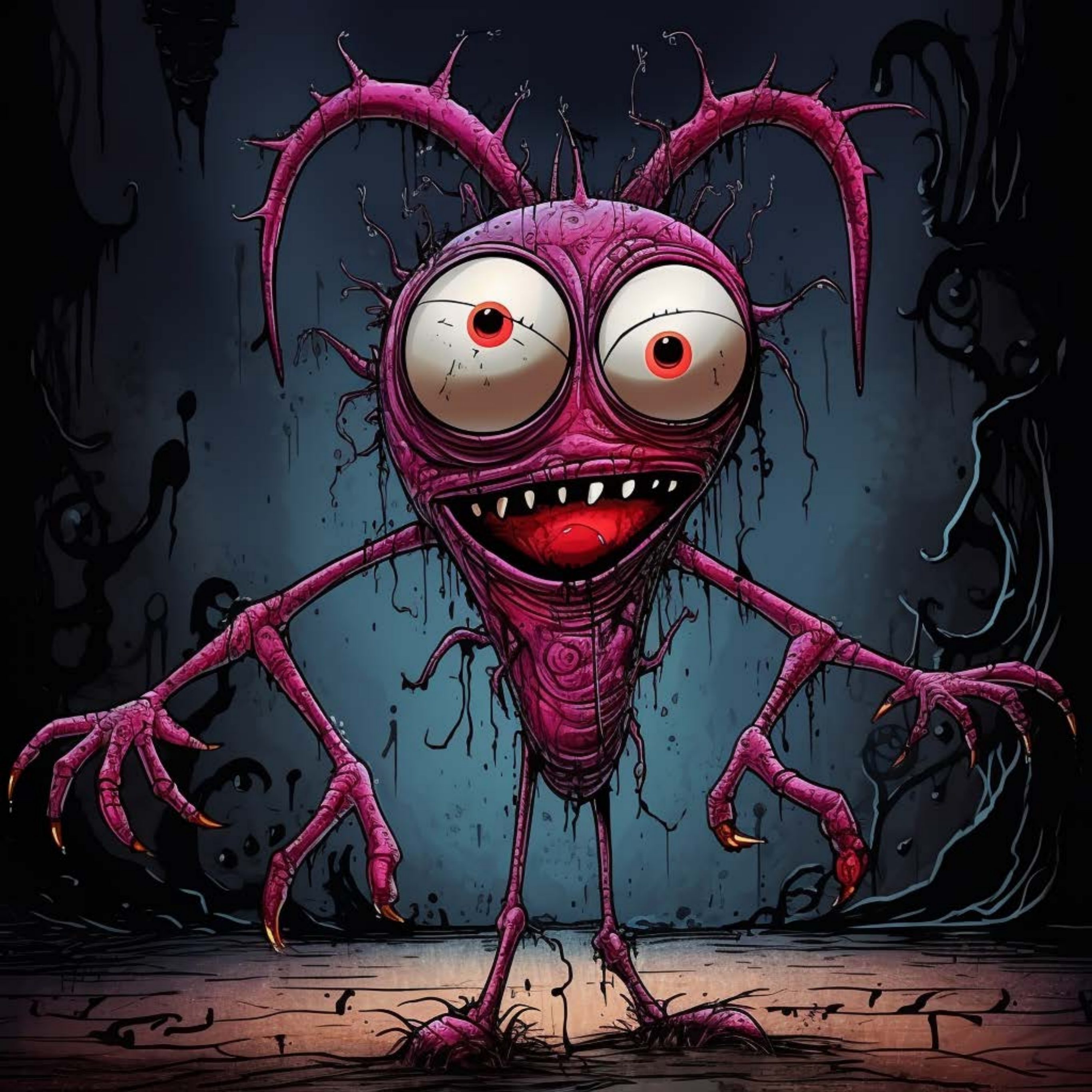




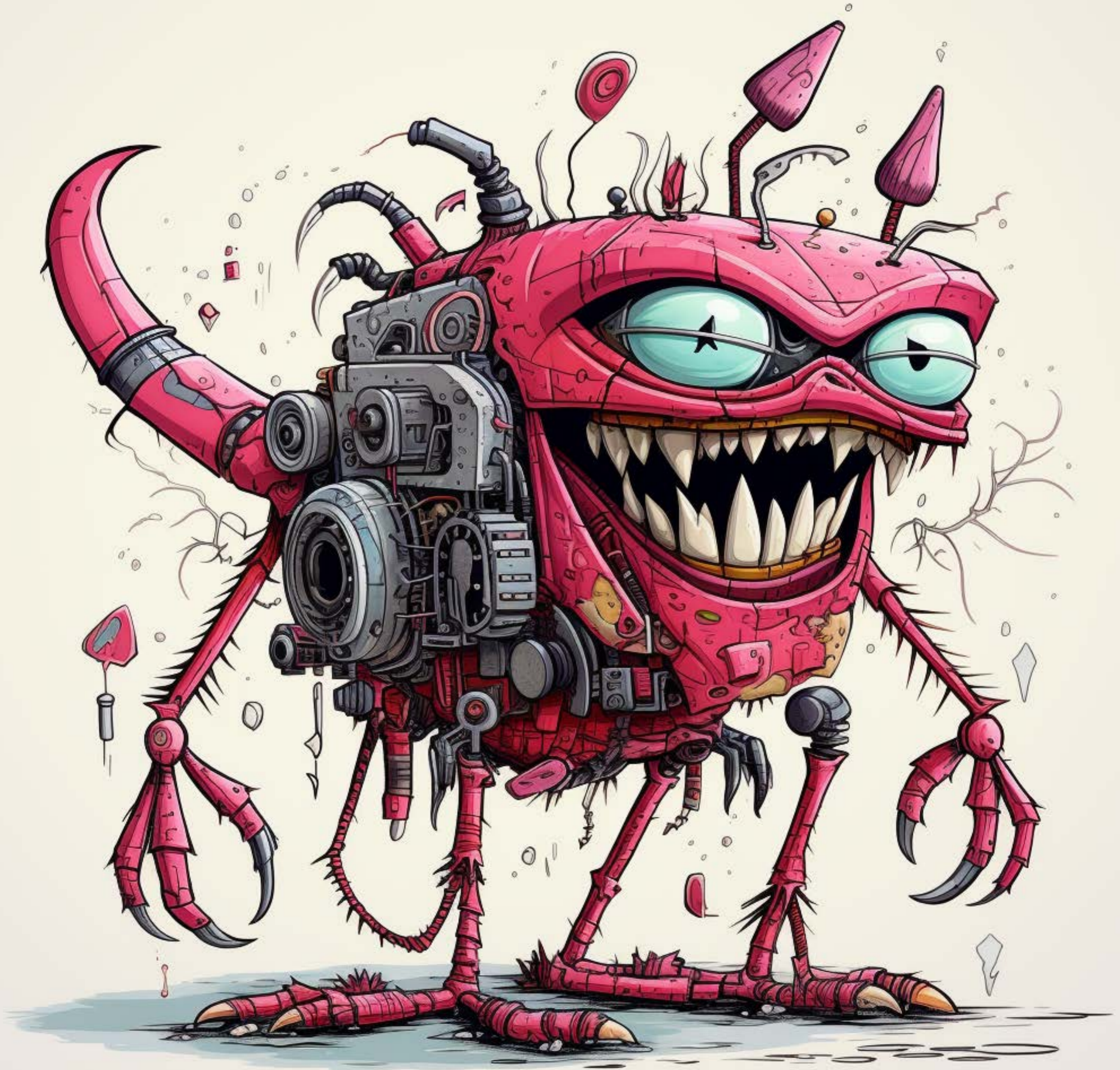




JOHN
SWAN

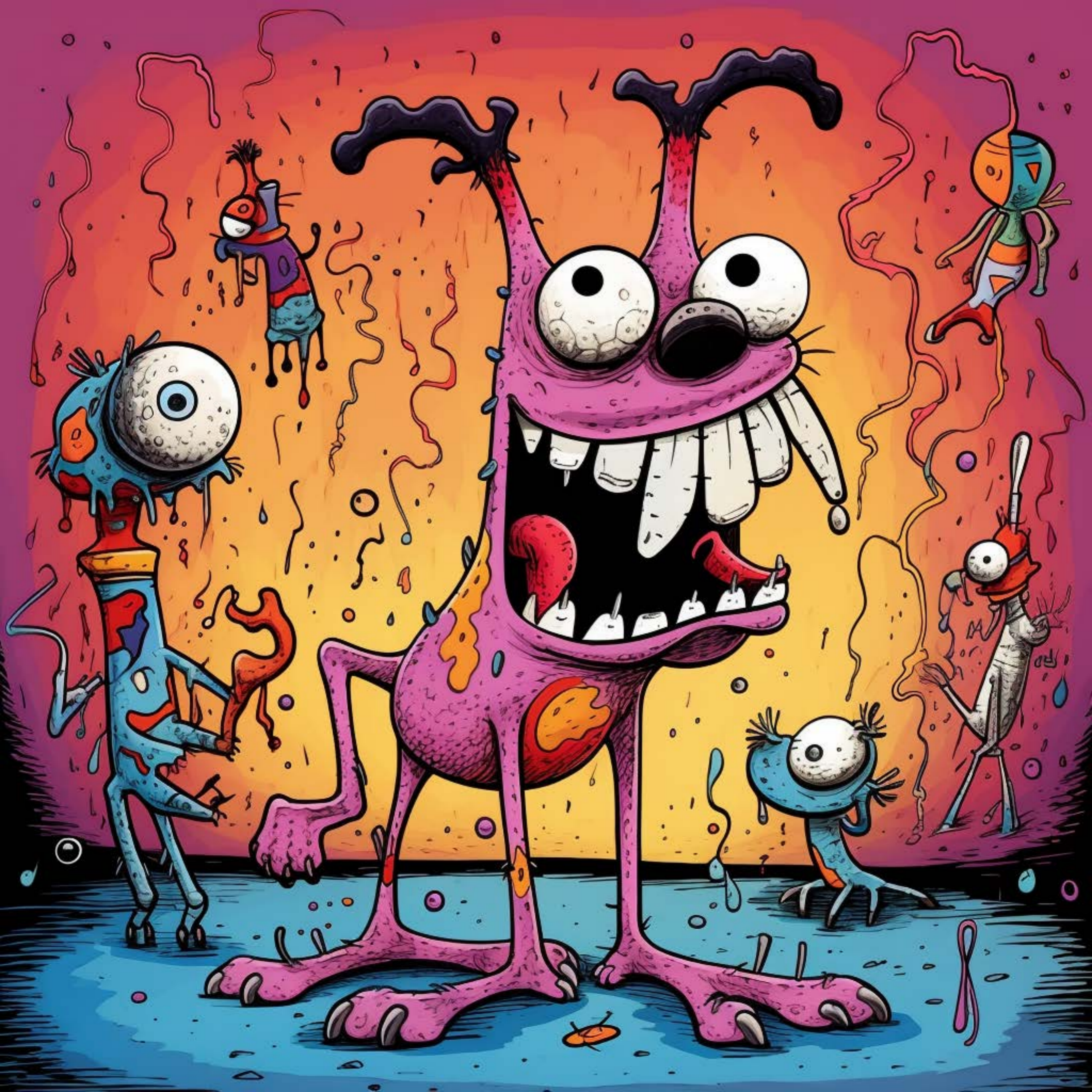


































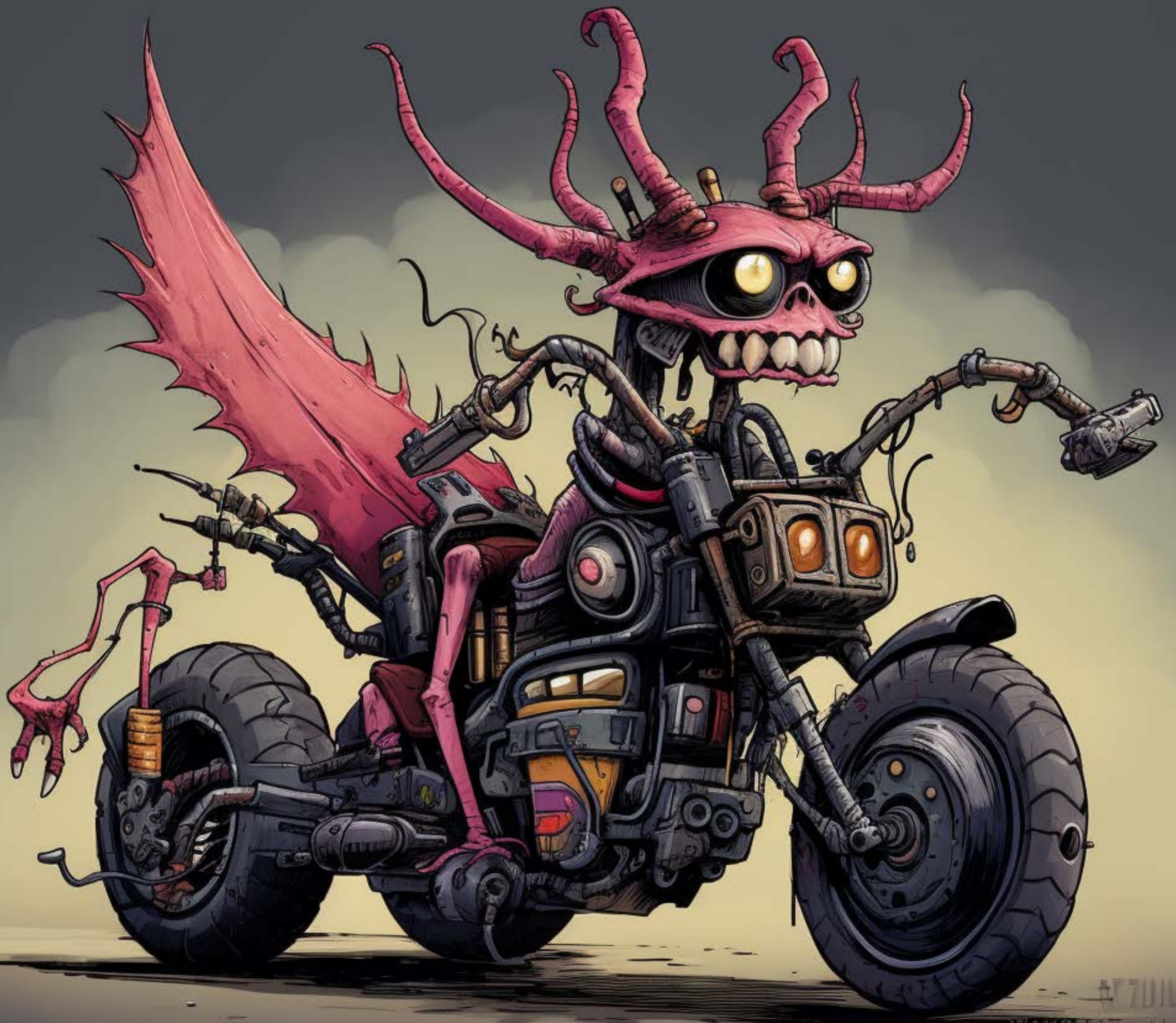












#70111
KONOMI







