



# Dall-E 3 .style//GUIDE

ep.07: Aaahh! Real Monsters

REPOSTME 



**All images were made with prompts in Dall-E 3 starting with: "Style of Aaahh! Real Monsters,"**

Hi! I'm Leo!

These guides are centered around styles.

In order to keep the style dominant, I use short, simple prompts, with my standard set being:

"a man"

"a woman"

"a dog"

"a cat"

"a cyborg"

"an alien"

"a monster"

"a car"

"a motorcycle"

"a house"

"a landscape"

"an arcology"



**Make sure to “dress” your styles.**

What? Add descriptors. Examples include:

**Mood:** happy, joyous, sad, frightened, terrified

**Lighting:** dark, intense, varied, chiaroscuro, diffuse

**Medium:** photograph, illustration, anime, painting

**Camera:** Canon EOS Mark5D, iPhone, GoPro, Polaroid

**Composition:** Skewed, centered, off-center



REPOSTME 

**Post your own image generations or tips  
below in comments, for fun and  
exposure!**

**I also take style requests!**























































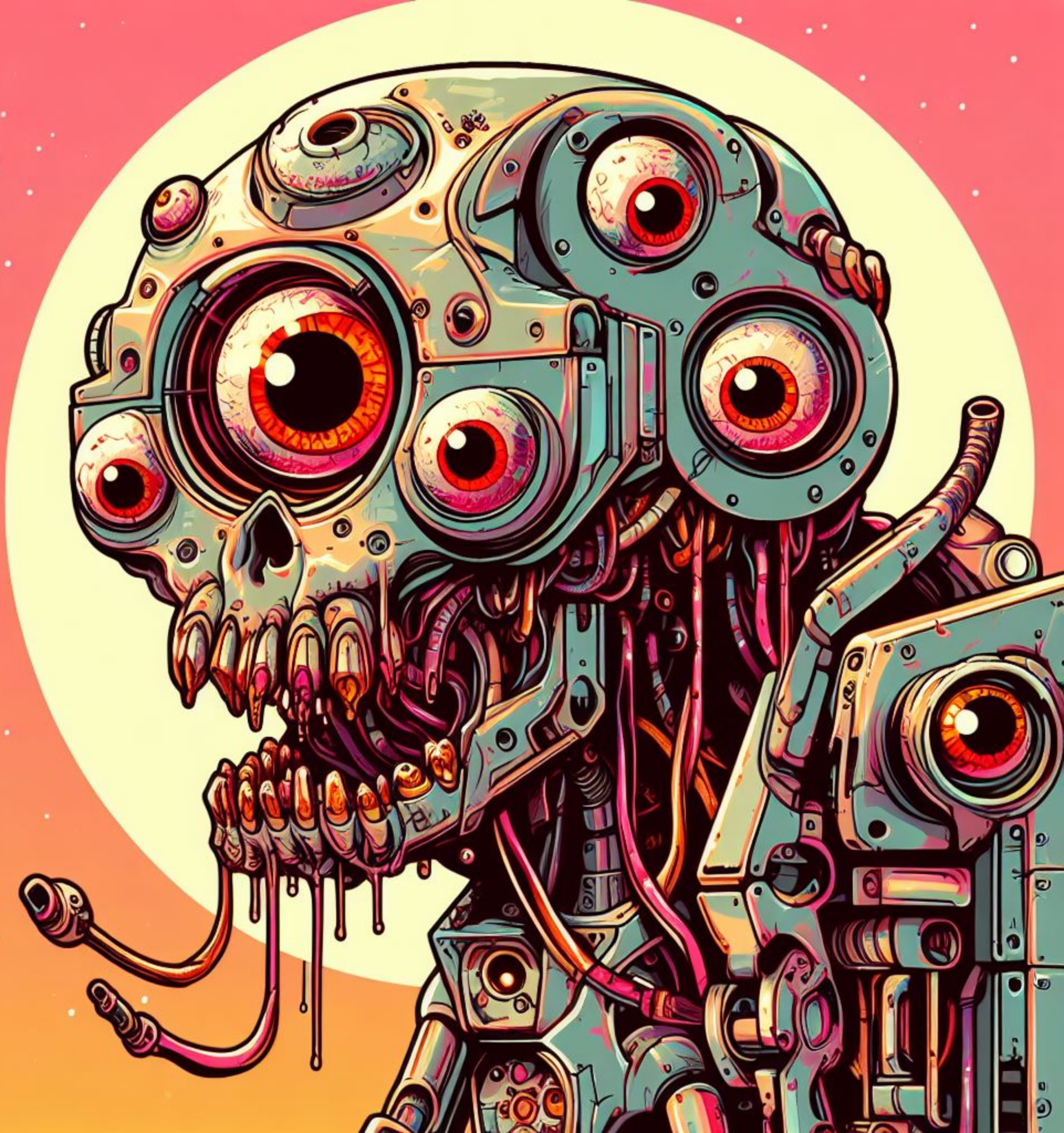


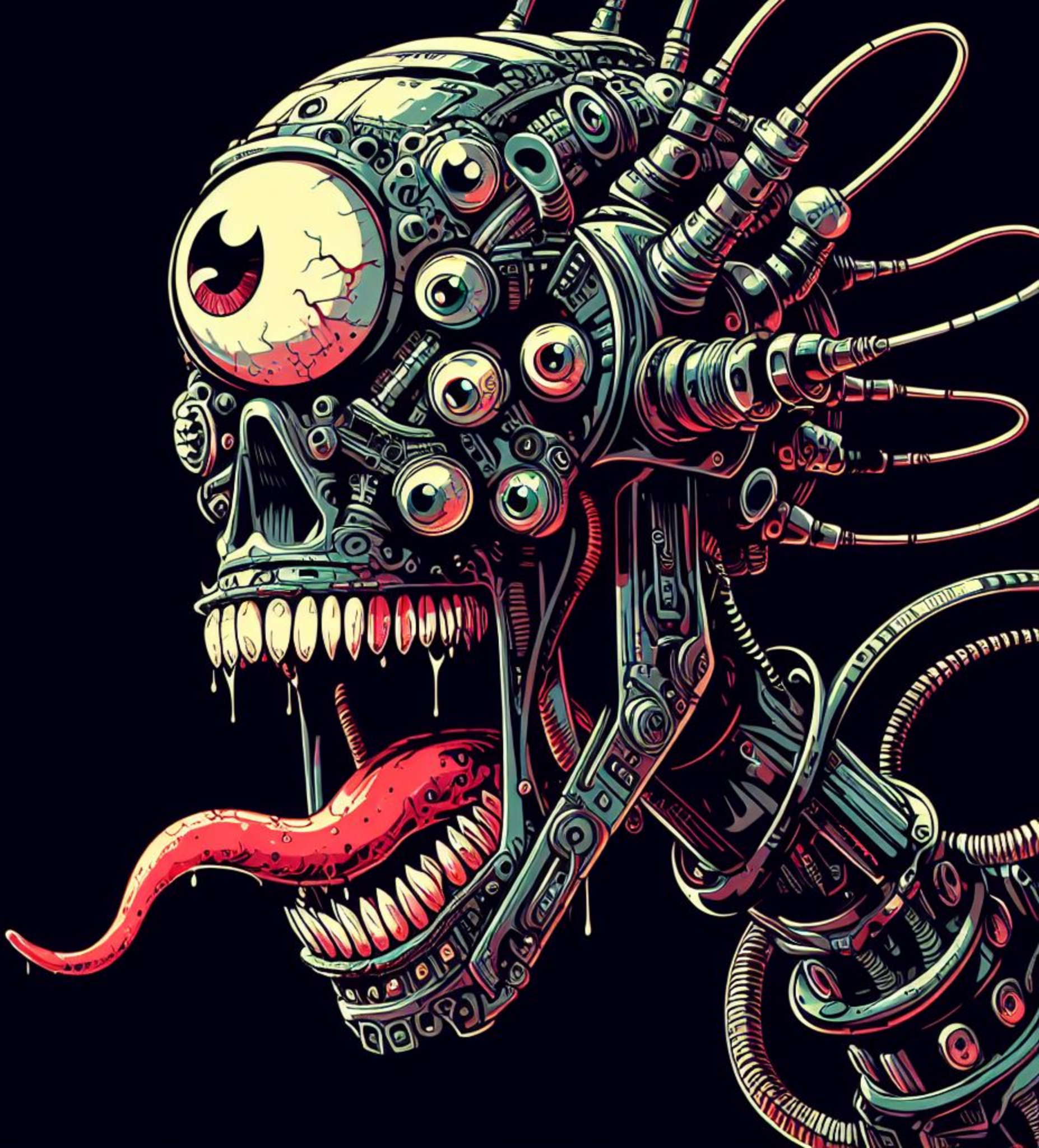
































AAAH!

AAAH!!













